

**INNOPOLIS** THE R&D INNOVATION CLUSTER  
OF THE REPUBLIC OF KOREA

# MAKING THE FUTURE



Transforming  
The Future of Korea



Ministry of Science and ICT

**INNOPOLIS**  
Foundation





## ABOUT THE INNOPOLIS THE INNOPOLIS MODEL

The INNOPOLIS is an R&D-led innovation cluster that generates a major driving force for national economic growth by creating national intellectual property and facilitating the commercialization of that intellectual property.

**An Innovation Cluster with a Virtuous Circle of R&D, Tech Commercialization, Re-investment**



**National Science  
& Technology  
Innovation**



**Regional  
Economic Growth**

**The INNOPOLIS**, as an R&D-focused innovation cluster, is contributing to national economic growth via intellectual property creation and technology commercialization.



## ABOUT THE INNOPOLIS THE INNOPOLIS TODAY

With the diffusion of the INNOPOLIS model to other regional hubs, total five INNOPOLISEs are currently in operation, making significant contributions to balanced regional development in South Korea.

From 2019 onwards, a sub-regional INNOTOWN, that is one-tenth the size of initial INNOPOLIS, will be created in response to increasing local governments' demands for innovation cluster.

INNOTOWN will lead regional economic growth through science and technology innovation.

### INNOPOLIS Daedeok

#### Specialized areas

- IT convergence
- Biomedical
- Nano convergence
- Precision machinery

### INNOPOLIS Jeonbuk

#### Specialized areas

- Convergence materials & components
- Agricultural/life science convergence

### INNOPOLIS Gwangju

#### Specialized areas

- Next-generation optics convergence
- Smart grid
- Green vehicles components
- Bio materials
- Design & cultural contents

### INNOPOLIS Daegu

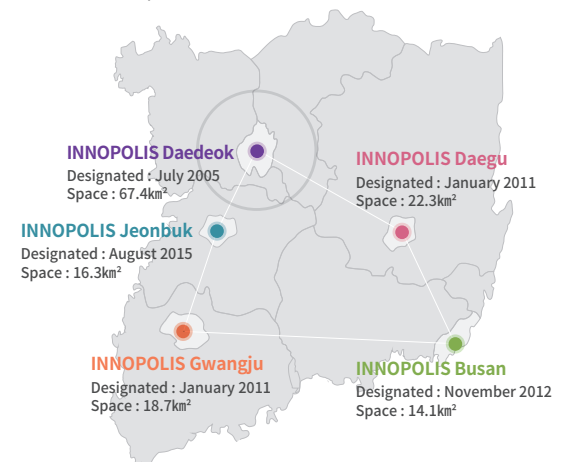
#### Specialized areas

- Smart IT convergence
- Medical devices
- Materials convergence
- Green energy convergence
- Mechatronics convergence

### INNOPOLIS Busan

#### Specialized areas

- Shipbuilding
- Offshore plant engineering & service
- Offshore plant materials
- Green offshore devices

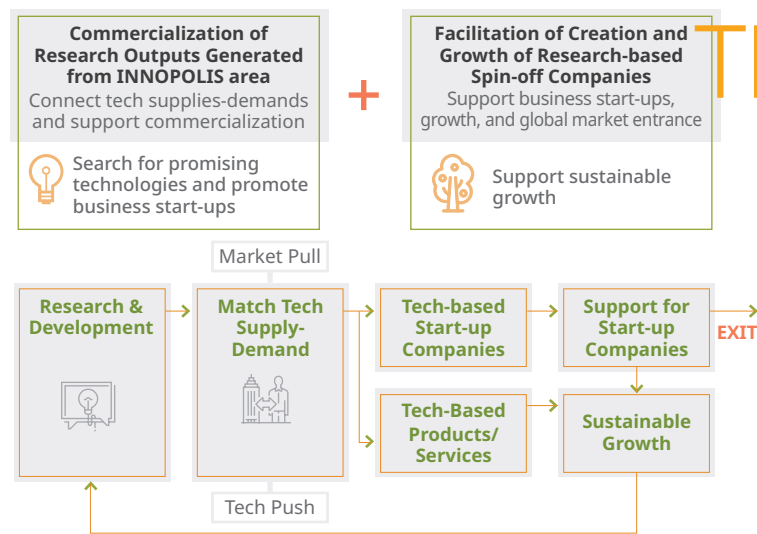


# ABOUT THE INNOPOLIS FOUNDATION MAJOR BUSINESSES

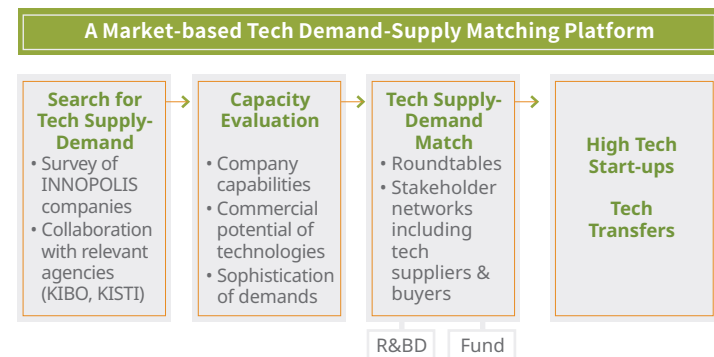
## All-Stages-Support for Public Technology Commercialization



We support the commercialization of technologies developed by government-funded research institutes. We identify technologies with great commercial potential and subsidize technology transfers and tech-based business start-ups.



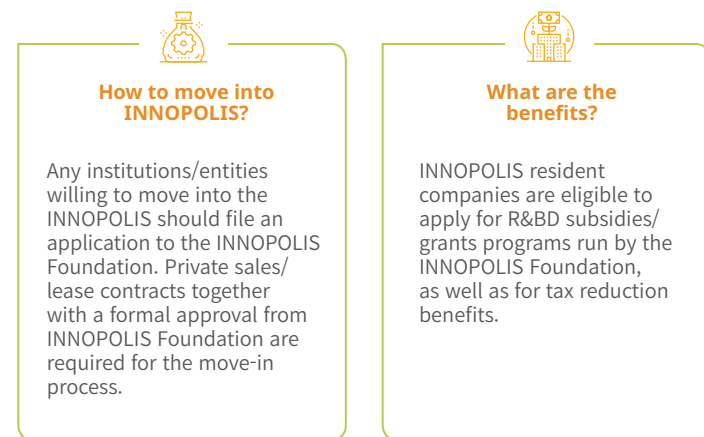
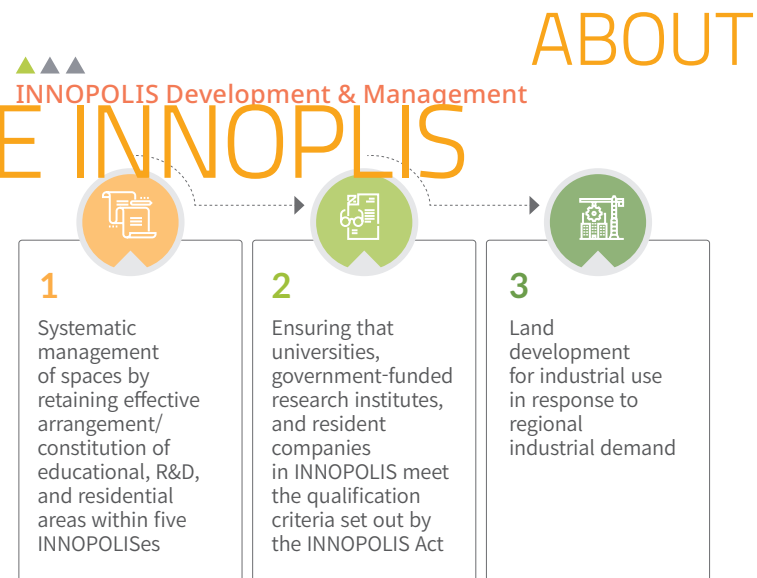
## Tech Demand & Supply Analysis



## Land Planning & Development, Infrastructure Management



The INNOPOLIS Foundation is dedicated to the provision of infrastructures and environments conducive to vibrant commercialization of innovative research outputs produced within five INNOPOLISes across the country.



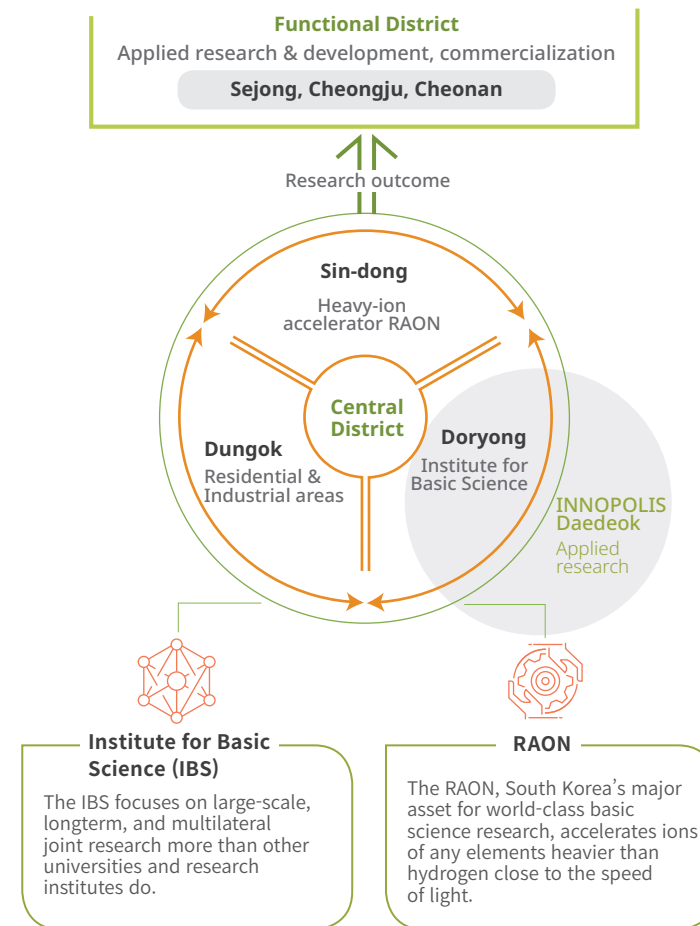
## International Science & Business Belt



The INNOPOLIS Foundation is dedicated to the diffusion of basic science research outcomes through the International Science & Business Belt.

### What is the International Science & Business Belt?

The International Science & Business Belt is an area where the central district and functional districts are interconnected to converge and develop basic research and business.



## Global Cooperation



Based on the strong cooperation network with science parks worldwide, we are supporting companies based in INNOPOLIS to extend their business abroad. We put our effort into strengthening the competitiveness of INNOPOLIS as an innovative cluster by networking through various exchange activities with overseas science parks.

### Global Cooperation Network

- Full membership in the IASP (International Association of Science Park and Areas of Innovation) → 340+ members in 70+ countries
- Full membership in the ASPA (Asian Science Park Association) → 150+ members in 20+ countries



### Sharing Experience of Science Park Establishment & Development

Through the annual STP Training Program, 50 years of accumulated know-how in science park establishment & development is shared with developing science parks worldwide.

### How to apply



### Apply Online

- Create an account at the STP Online Application System ([www.stp.or.kr](http://www.stp.or.kr))
- Login using the username and password you have created
- Complete a personal information section
- Upload required documents
- Submit your application
- Final result will be notified via [www.stp.or.kr](http://www.stp.or.kr)

### Who can join



- Working knowledge of English
- Professionals from STPs, relevant government ministries or other public/private institutions
- Experience in STP development areas (preferred)

### Contact:

- Homepage : [www.stp.or.kr](http://www.stp.or.kr)
- E-mail : [stp@innopolis.or.kr](mailto:stp@innopolis.or.kr)



**INNOPOLIS,**  
South Korea's major innovation cluster,  
will be a sustainable driving force  
for Korea's economic growth  
to achieve GDP per capita of USD 40,000.



**INNOPOLIS**  
**Foundation** 



**INNOPOLIS Foundation**

27-5, 123-gil, Expo-ro, Yuseong-gu, Daejeon

T. +82-42-865-8800